

Taylorlton-Pinto: Midale

Summary

The Mississippian Midale in southeast Saskatchewan has produced substantial hydrocarbons at sub-crops for many years. Since 2012, several companies have utilized multi-stage hydraulic fracturing in the lower permeability Midale with impressive results.

In the Taylorlton-Pinto area, the porous portions of the Midale Beds are found between the tight Frobisher and Midale evaporites which provide lateral and vertical seals. The Midale in the nearby Pinto Units has historically produced substantial hydrocarbons vertically, however in the past several years very high initial rates have been achieved in the new horizontal wells surrounding the historical vertical developments.

Play Synopsis

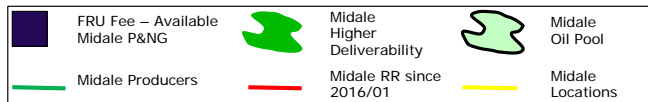
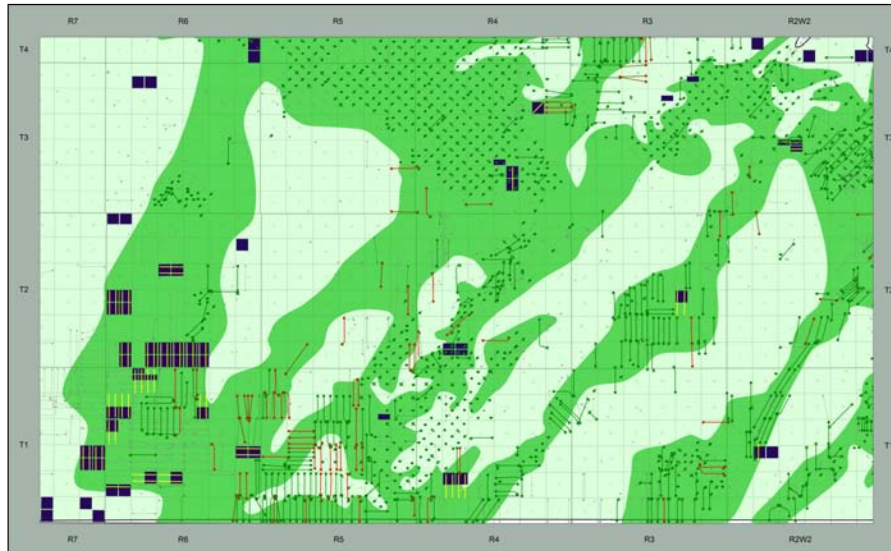
Fluid	Oil, 31 API
Active operators	Crescent Point, Spartan
Completions	Multi-stage Hydraulic Fracturing
Depth	1650-1750m
Lithology	Carbonate
Average Porosity	13%
Water Saturation	45%
Type well EUR	85.2 Mboe
Type well IP(90)	172 boed

Capital Costs

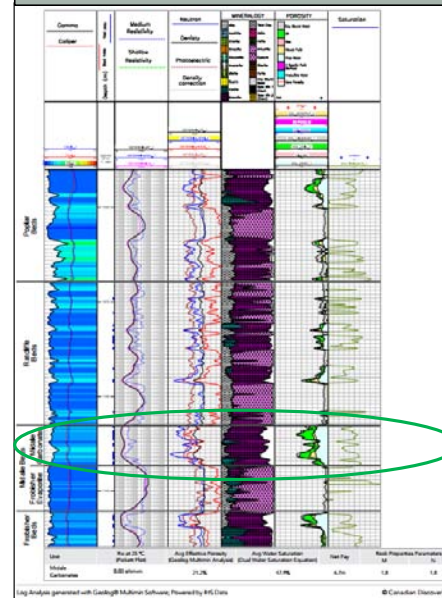
DCET \$1.7MM

With 20% Lessor Royalty

IRR BT	47%
Payout	1.6 years
F&D	\$19.94/boe
Netback (IP90)	\$35.90/boe
Recycle Ratio	1.80



Offset Well Petrophysical Analysis 11/05-28-001-06W2/0



Type Curve Analysis

