

# Skinner Lake: Ratcliffe

## Summary

The Ratcliffe Beds of the Charles Formation are composed of dolomites and limestones interbedded with anhydrite, deposited in a variably restricted shallow shelf environment. Conventional trapping can be due to lateral updip facies changes, structural features, or a combination of stratigraphic and structural elements.

Over the last few years, horizontal drilling in the Ratcliffe has increased. Because most wells are completed open hole, the unit is contributing significantly to the panoply of stacked, mainly Paleozoic reservoirs in southeastern Saskatchewan.

## Play Synopsis

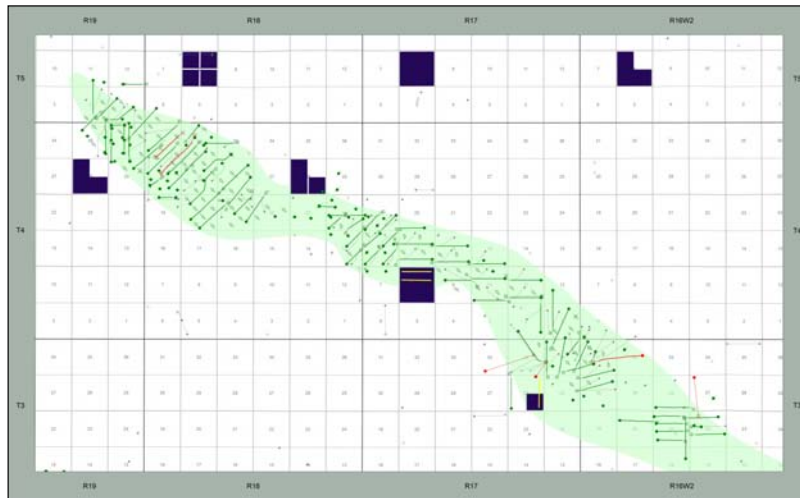
Fluid	Oil, 30 API
Active operators	Enerplus, TORC
Current Activity	Waterflood
Completions	Open Hole
Depth	1850 – 1880 m
Lithology	Carbonate
Average Porosity	14%
Water Saturation	45%
Type Well EUR	252 MBOE
Type Well IP(90)	101 bbl/d

## Capital Costs

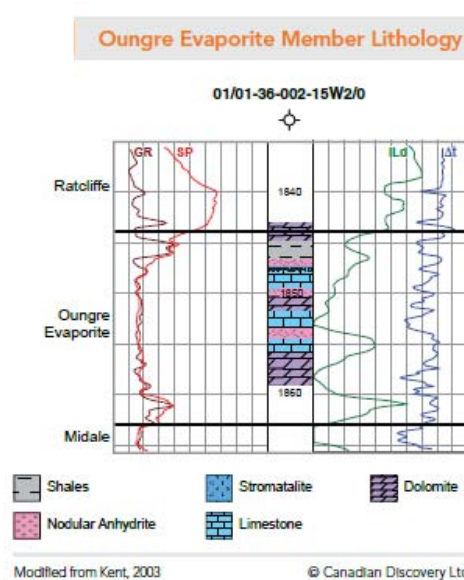
DCET \$2.75MM

## With 20% Lessor Royalty

IRR BT	54%
Payout	2.1 years
F&D	\$10.89/boe
Netback (IP90)	\$45.91/boe
Recycle Ratio	4.21



## Offset Well Log



## Type Curve Analysis

