

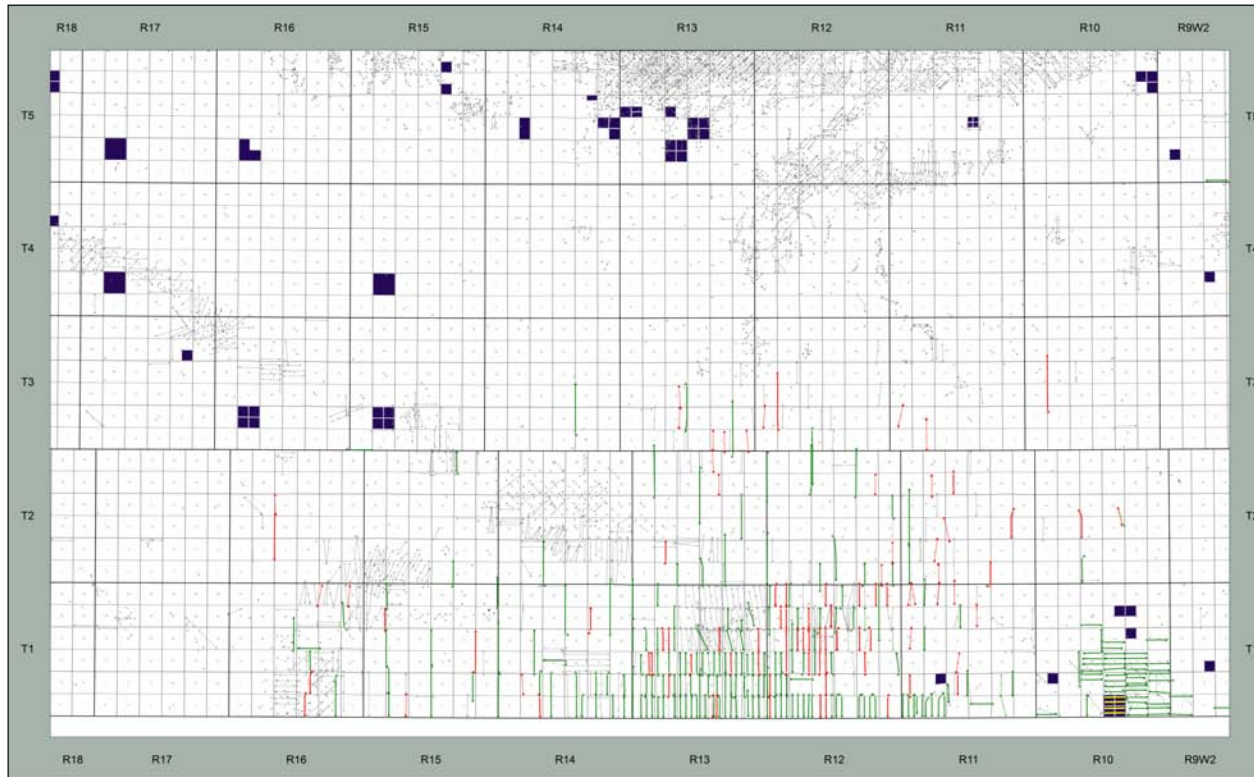
# SE Sask: Regional Torquay

## Summary

Recently the Torquay, which directly underlies the Bakken, has been actively developed along the US-Canada border. Area operators are still delineating the economic extent of the Torquay play. The oil in the Torquay is trapped by a decrease in permeability that prevents the oil from continuing to migrate to the north.

## Play Synopsis

Fluid	Oil, 40 API
Active operators	Crescent Point, Steppe
Completions	Multi-stage Hydraulic Fracturing
Depth	2220 – 2280 m
Lithology	Carbonate
Average Porosity	7%



## Offset Well Petrophysical Analysis

