

Frys - Parkman: Tilston

Summary

The Mississippian Tilston in southeast Saskatchewan has produced substantial hydrocarbons at sub-crops for many years. Most recent development focuses on open hole horizontal drilling and delivers some of the best economics in the WCSB.

Tilston oil well production is characterized by high initial rates and moderate declines.

Play Synopsis

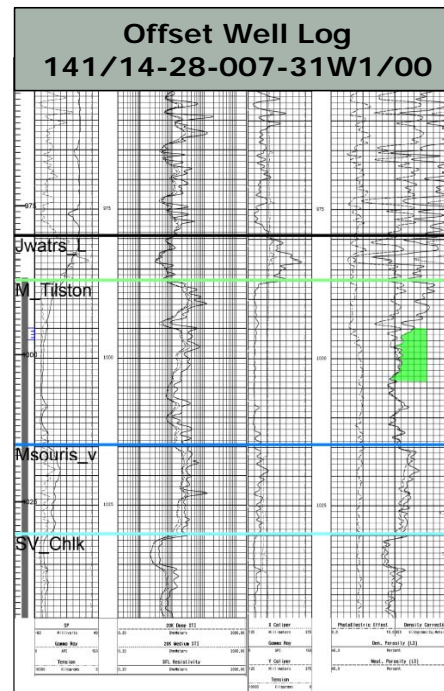
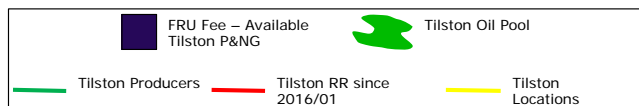
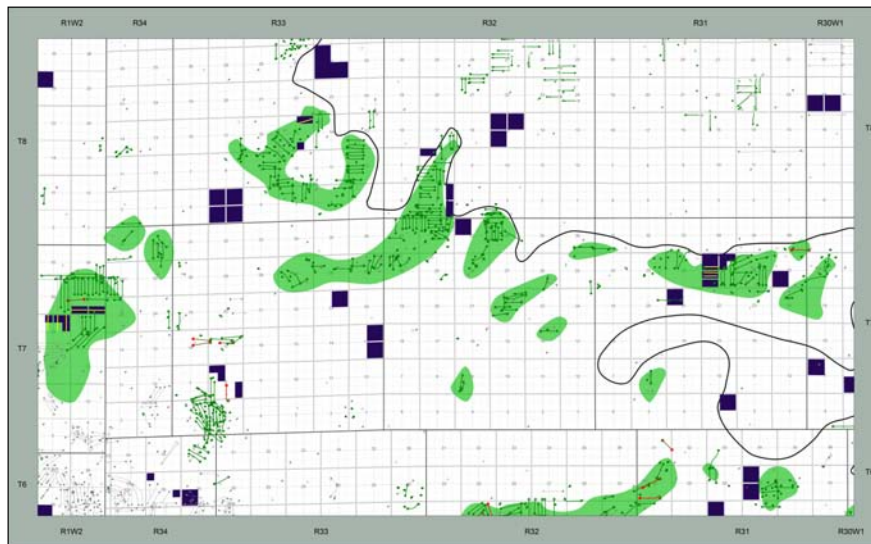
Fluid	Oil, 36 API
Active operators	Midale Petroleum
Completions	Open Hole
Depth	1050m
Lithology	Carbonate
Average Porosity	14%
Water Saturation	40%
Type well EUR	123 Mboe
Type well IP(90)	104 boed

Capital Costs

DCET \$1.2MM

With 20% Lessor Royalty

IRR BT	73%
Payout	1.6 years
F&D	\$9.58/boe
Netback (1P90)	\$43.25/boe
Recycle Ratio	4.51



Type Curve Analysis

