

Frys: Alida

Summary

The Mississippian Alida in southeast Saskatchewan has produced substantial hydrocarbons at sub-crops for many years. Most recent development focuses on open hole horizontal drilling and delivers some of the best economics in the WCSB.

Deposited on a broad carbonate shelf, the Alida shows best reservoir potential in local buildups that develop packstone/grainstone shoals. These oil pools occur on local structural highs at or near the Alida subcrop edge.

Alida wells are often characterized by high initial rates and moderate declines.

Play Synopsis

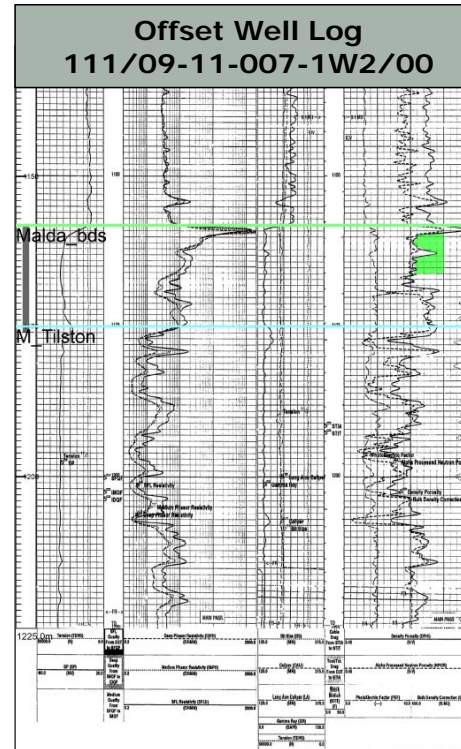
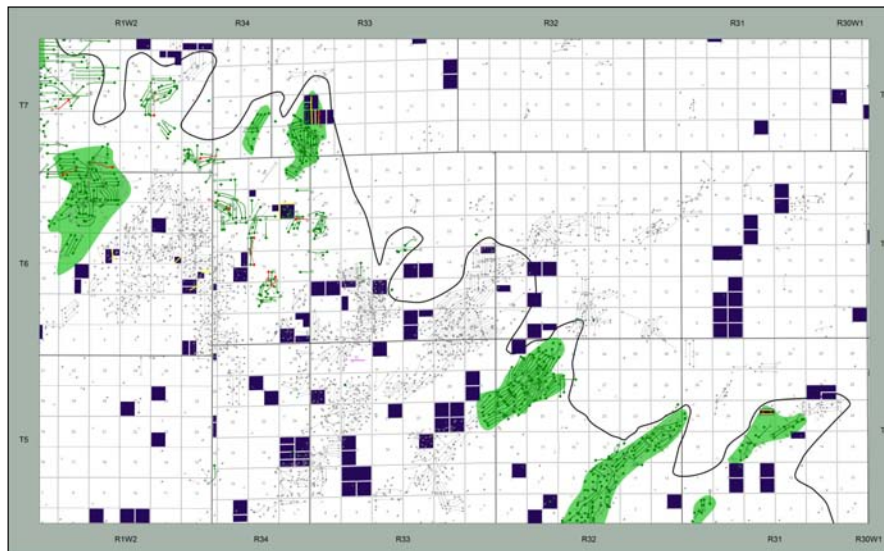
| | |
|------------------|-------------------------|
| Fluid | Oil, 31 API |
| Active operators | Crescent Point, Spartan |
| Completions | Open hole |
| Depth | 1150m |
| Lithology | Carbonate |
| Average Porosity | 15-19% |
| Water Saturation | 40% |
| Type well EUR | 95 Mboe |
| Type well IP(90) | 108 boed |

Capital Costs

DCET \$1.2MM

With 20% Lessor Royalty

| | |
|----------------|-------------|
| IRR BT | 65% |
| Payout | 1.6 years |
| F&D | \$12.38/boe |
| Netback (IP90) | \$44.76/boe |
| Recycle Ratio | 3.62 |



Type Curve Analysis

