

# Enchant: Sawtooth

## Summary

The Sawtooth is recognized in the south-central Alberta Plains and in Montana north and west of the Sweetgrass Arch. Thicknesses are highly variable, as the Sawtooth overlies a high-relief surface sculpted in Mississippian carbonates by pre-Jurassic erosion. At the type locality the Sawtooth is 5 m (16 ft) thick; it thins eastward and pinches out over the Sweetgrass Arch, except in areas of southern Alberta, where a thin sandstone remains. The northern subcrop edge in Ranges. 11-15W4 in southern Alberta is deeply dissected by pre-Cretaceous erosion.

## Play Synopsis

Fluid	Oil, 25 to 29 API
Pay Thickness	3.3m to 7m
RF (Primary)	1.8%
Fm. Temp.	32°C
Active operators	N/A
Completions	Open hole, liner
Depth	950m
Lithology	Sand/Clastic
Average Porosity	12 to 18%
Water Saturation	30%
Type Well EUR	106 mboe
Type Well IP90	67 boed

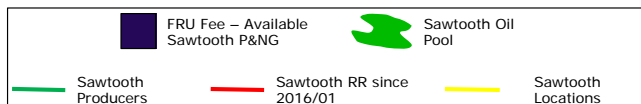
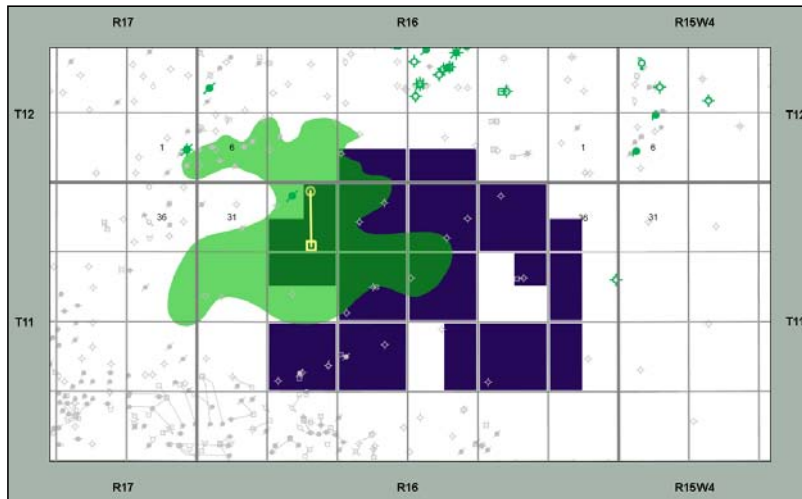
## Capital Costs

DCE&T: \$750M

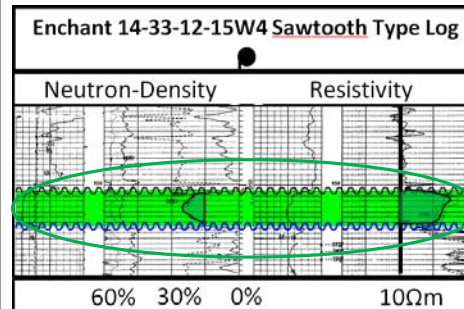
## With 20% Lessor Royalty

IRR BT: 124%  
Payout: 1.1 years  
F&D: \$7.11/boe  
Netback (IP 90): \$35.73/boe  
Recycle Ratio: 5.0

## Sawtooth Oil Pool Map - Enchant



## Offset Well Log



## Type Curve Analysis

