

Arcola-Star Valley: Alida



Summary

The Mississippian Alida in southeast Saskatchewan has produced substantial hydrocarbons at sub-crops for many years. Most recent development focuses on open hole horizontal drilling and delivers some of the best economics in the WCSB.

Deposited on a broad carbonate shelf, the Alida shows best reservoir potential in local buildups that develop packstone/grainstone shoals. These oil pools occur on local structural highs at or near the Alida subcrop edge.

Alida wells are often characterized by high initial rates and moderate declines.

Play Synopsis

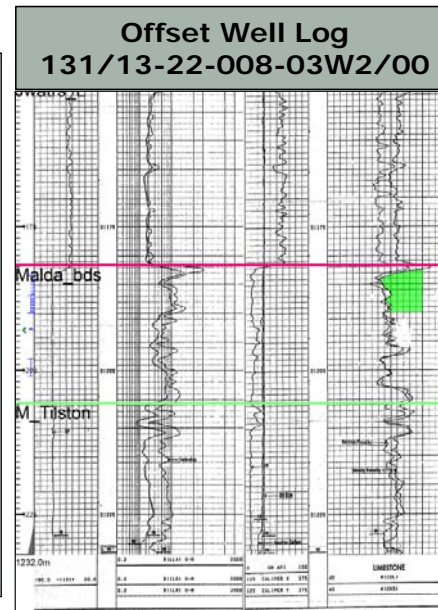
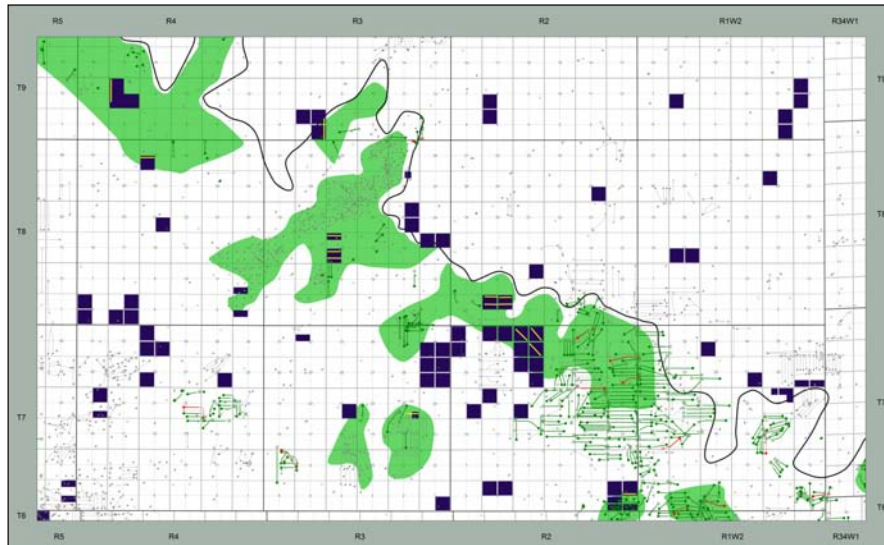
Fluid	Oil, 34 API
Active operators	Spartan, Crescent Point
Completions	Open hole
Depth TVD	1200m
Lithology	Carbonate
Average Porosity	15%
Water Saturation	35%
Type well EUR	95 Mboe
Type well IP(90)	108 boed

Capital Costs

DCET \$1.2MM

With 20% Lessor Royalty

IRR BT	65%
Payout	1.6 years
F&D	\$12.38/boe
Netback (IP90)	\$44.76/boe
Recycle Ratio	3.62



Type Curve Analysis

