

# AB/Sask: Heavy Oil Corridor

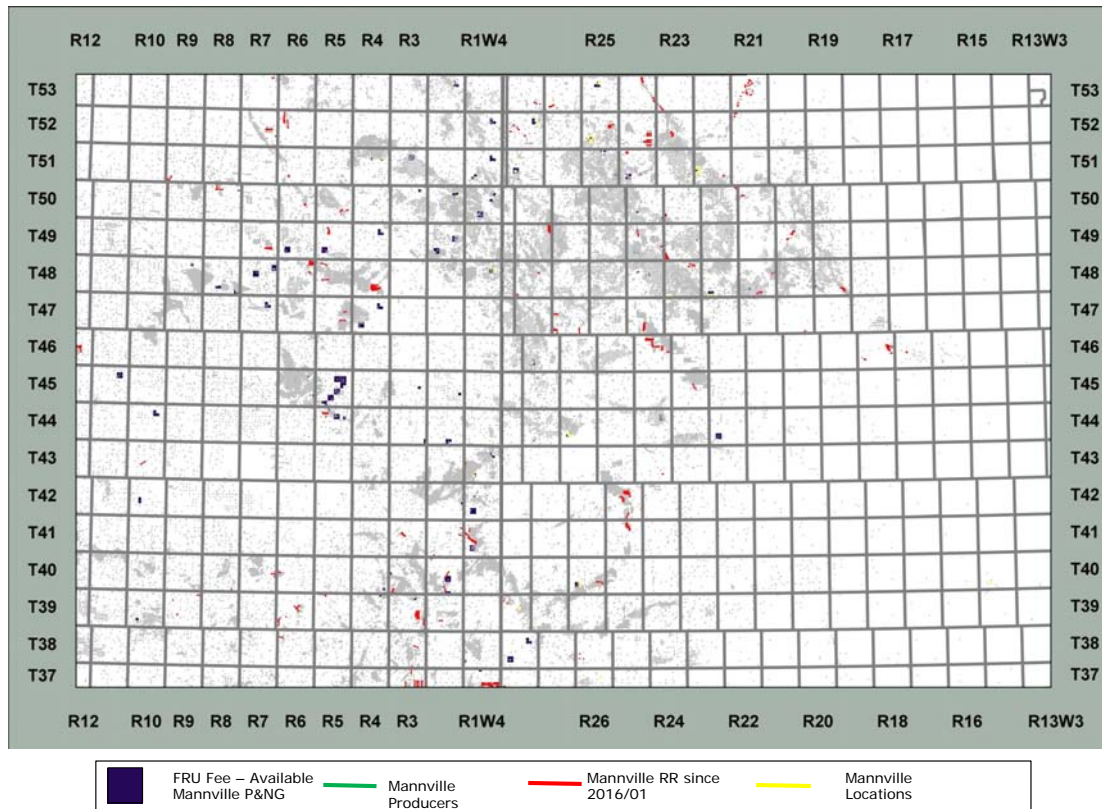
## Summary

Within the heavy oil corridor along the Alberta-Saskatchewan border lie multiple often stacked Mannville opportunities within the Lower Cretaceous. Targets include the McLaren, Waseca, Sparky, General Petroleum (GP) and the Cummings.

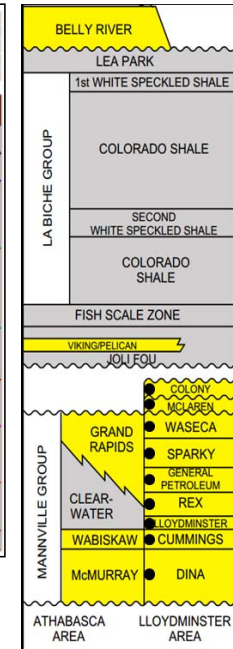
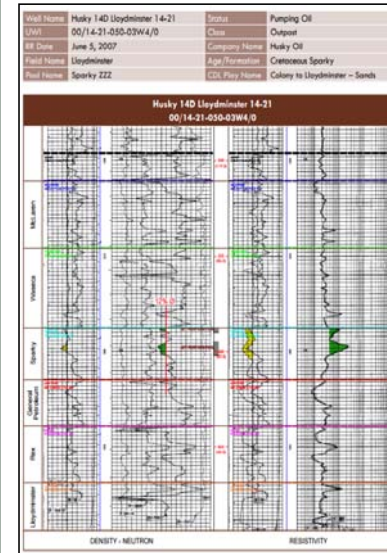
The aforementioned targets were deposited either as part of a marine shoreface complex in the region or channel sands. The respective reservoirs can be both defined stratigraphically and structurally.

## Play Synopsis

Fluid	Oil, 15 API to 23 API
Pay Thickness	1.5m to 20m
Rf (Primary)	6% to 13.7%
Fm. Temp.	21°C to 34°C
Active operators	Rifle Shot, Rockeast, CNRL, Northern Blizzard, Gear, Husky, Baytex, Sojourn
Completions	Open hole
Depth	450m to 900m
Lithology	Sands/Silts
Average Porosity	24% to 31%
Water Saturation	27% to 63%



## Area Type Well



# AB/Sask: Heavy Oil Corridor



## Summary

Within the heavy oil corridor along the Alberta-Saskatchewan boarder lie multiple often stacked Mannville opportunities within the Lower Cretaceous. Targets include the McLaren, Waseca, Sparky, General Petroleum (GP) and the Cummings.

The aforementioned targets were deposited either as part of a marine shoreface complex in the region or channel sands. The respective reservoirs can be both defined stratigraphically and structurally.

**\*Attractive secondary/recompletion target**

### Capital Costs

DCE&SWB: \$830M

### With 20 % Lessor Royalti

IRR BT: 32%  
Payout: 3.1 years  
F&D: \$9.28/boe  
Netback (IP 90): \$27.43/boe  
Recycle Ratio: 3.0

**Type Well EUR: 89 mboe  
Type Well IP90: 28 boed**

### Capital Costs

DCE&SWB: \$830M

### With 20% Lessor Royalty (Not Economic as primary zone)

IRR BT: 3%  
Payout: 8.4 years  
F&D: \$20.39/boe  
Netback (IP 90): \$22.50/boe  
Recycle Ratio: 1.1

**Type Well EUR: 41 mboe  
Type Well IP90: 17 boed**

### Capital Costs

DCE&SWB: \$830M

### With 20% Lessor Royalty

IRR BT: 77%  
Payout: 1.6 years  
F&D: \$7.82/boe  
Netback (IP 90): \$26.86/boe  
Recycle Ratio: 3.4

**Type Well EUR: 106 mboe  
Type Well IP90: 63 boed**

**\*Attractive secondary/recompletion target**

## McLaren

## Waseca

## Sparky

## General Petroleum

## Cummings

